

# Ključ podešavajući

250/1ADP



## Profili

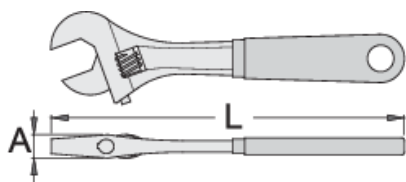


## Standardi

DIN 3117, ISO 6787

## Opis proizvoda





- materijal: premium hrom-vanadijum čelik
- kovan, u potpunosti kaljen i ojačan
- hromiran (ISO 1456:2009)
- polirani vrhovi
- sa mernom skalom
- ručka obložena sa duplim slojem plastike
- izrađen prema standardu ISO 6787



L

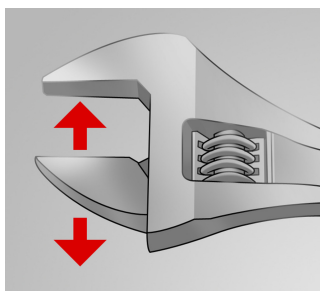
A



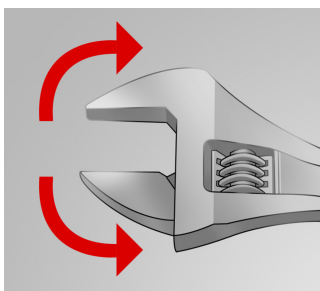
		L	A		
617246	200	205	15	24	280
617247	250	255	17	27	490
617248	300	305	20	34	785
617249	380	385	26	41	1395

\* Fotografije proizvoda su simbolične. Sve dimenzije su u mm, a težina u gramima. Sve navedene dimenzije mogu odstupati u granicama tolerancija.

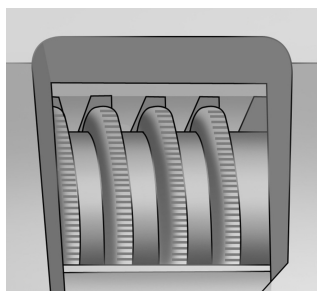
## Upotreba (slike)



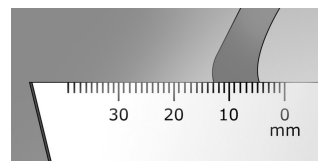
podesiv otvor čeljusti ključa



Ključ omogućava rotaciju u oba smera - i odvijanje i pritezanje



nazubljen podešavajući vijak



merna skala

## Slika (slike)



## Rezervni delovi



Rezervni delovi za art. 250/1 i 250/1ADP

## Pravilna upotreba



- Discard any wrench with a spread or damaged fixed jaw or a bent handle

Bezbednost (slike)

