



Unior d.d.  
Kovaška cesta 10  
3214 Zreče, Slovenia  
T: +386 3 757 81 00  
www.uniorbiketools.com

90962032

1693R

EN

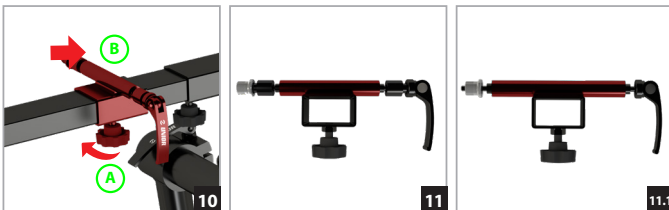
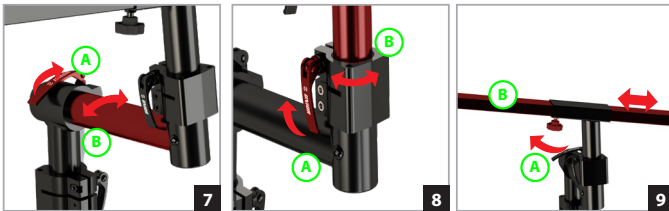
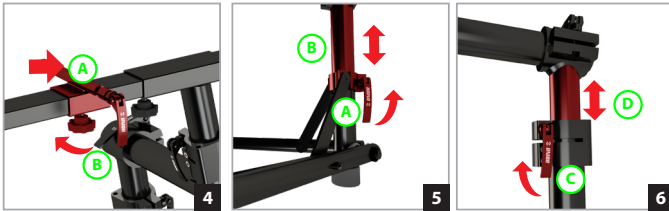
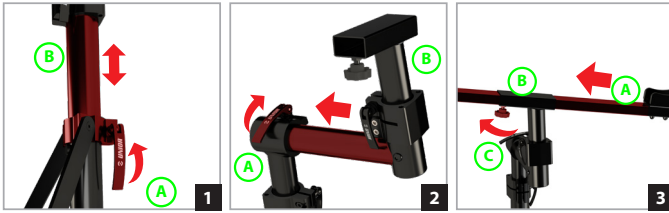
Pro road repair stand

SLO

Profesionalno cestno stojalo

 **UNIOR**<sup>®</sup>  
BIKE TOOLS

uniorbiketools.com

**Pro road stand assembly:**

1. To open the bike stand foldable legs, release lever (1A) and push the slider (1B) in the desired direction.
2. Open lever on upper sliding tube (2A) and insert t-clamp into it (2B). Secure it in place with closing the lever.
3. Insert the main beam (3A) through beam support (3B). Lock it in place with tightening the knob on beam support (3C)
4. Install the Quick release dropout lock (4A) on main beam and secure it in place with tightening the knob (4B)

**Pro road stand adjustment:****5. Adjust legs**

To adjust the bike stand foldable legs release lever (5A) and push the slider (5B) in the desired direction.

**6. Adjust bike stand height**

To adjust the bike stand height release the lever (6C) and adjust the top tube (6D).

**7. Adjust bike stand angle (tilt)**

To adjust the angle of the main beam, open the lever on top of upper sliding tube (7A) and tilt main beam (7B) in desired direction. Close the lever when the desired angle is reached.

**8. Rotation of the main beam**

Open lever on T-Clamp (8A) and rotate main beam (8B) to desired position. Close the lever to lock main beam in new position.

**9. Adjusting main beam**

To adjust beam back and forth loosen the knob under the main beam support (9A) and slide beam (9B) to desired position. Tighten knob to lock the main beam in position.

**10. Adjusting quick release dropout lock**

To adjust quick release dropout lock back and forth loosen the knob under the quick release fork mount (10A) and slide it to desired position (10B). Tighten knob to lock the quick release fork mount in place.

**11. Quick release dropout lock**

To mount the fork of the bike with quick release system on Pro road stand, adjust the adapters on quick release dropout lock as shown on the picture 11.

**11.1.** To mount the back end of the bike with quick release system on Pro road stand, adjust the adapters on quick release dropout lock as shown on the picture 11.1.

**Load capacity: 27,5 kg**

**Navodila za sestavo profesionalnega cestnega stojala:**

1. Za odpiranje nog stojala odprite ročico (1A) in potisnite drsnik (1B) navzdol.
2. Odprite ročico na zgornji drsni cevi (2A) in vstavite t-kos vanjo (2B) ter zaprite ročico, da jo pričvrstite.
3. Vstavite nosilec kolesa (3A) skozi podpornik nosilca kolesa (3B) in privijte vijak pod podpornikom nosilca kolesa, da ga fiksirate(3C).
4. Namestite adapter za vpenjanje kolesa (4A) na nosilec kolesa in ga pričvrstite s privitjem vijaka pod njim (4B).

**Nastavitve profesionalnega cestnega stojala:****5. Nastavitev zložljivih nog stojala**

Za odpiranje ali zapiranje nog stojala odprite ročico (5A) in potisnite drsnik (5B) navzgor ali navzdol.

**6. Nastavitev višine stojala**

Za nastavljanje višine stojala sprostite ročico (6C) in nastavite zgornjo cev na želeno višino (6D)

**7. Nastavitev naklona stojala**

Za nastavljanje naklona nosilca kolesa odprite ročico na vrhu pomične cevi (7A) in nagnite nosilec kolesa (7B) v želeni položaj. Zaklenite nosilec kolesa v želenem položaju z zapiranjem ročice.

**8. Obračanje nosilca kolesa**

Odprite ročico na T-kosu (8A) in obrnite nosilca kolesa (8B) v želeni položaj. Zaprite ročico, da zaklenete stojalo v novem položaju.

**9. Nastavljanje položaja nosilca kolesa**

Za nastavljanje nosilca kolesa naprej in nazaj odvijte vijak pod podporo nosilca kolesa (9A) in nastavite nosilec kolesa (9B) v želeni položaj. Privijte vijak, da nosilec kolesa ostane v novo nastavljenem položaju.

**10. Nastavitev položaja adapterja za vpenjanje kolesa**

Za spreminjanje položaja adapterja za vpenjanje kolesa odvijte vijak pod adapterjem (10A) in ga namestite v želeni položaj (10B) ter privijte vijak.

**11. Nastavitev adapterja za vpenjanje kolesa**  
Za vpenjanje vilice cestnega kolesa v stojalo nastavite adapterje, kot prikazuje slika 11.

**11.1.** Za vpenjanje zadnjega dela cestnega kolesa v stojalo adapterje nastavite, kot prikazuje slika 11.1.

**Maksimalna nosilnost stojala: 27,5 kg**