

# Ključ viljuškasto-okasti kratki

125/1



## Profili

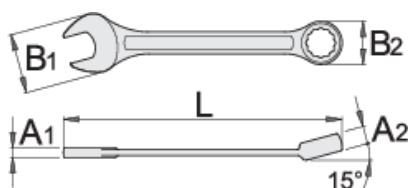


## Standardi

ISO 7738

## Opis proizvoda

- materijal: premium hrom-vanadijum čelik
- kovan, u potpunosti kaljen i ojačan
- hromiran (ISO 1456:2009)
- polirani vrhovi
- obuhvatni (okasti) deo sa LIFE profilom
- izrađen prema standardu ISO 7738 (samo metričke dimenzije)
- izrađen prema standardu ISO 3318 i DIN 3113A (samo metričke dimenzije)



L

B2

B1

A2

A1





L

B2

B1

A2

A1

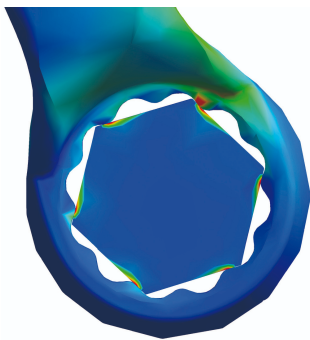
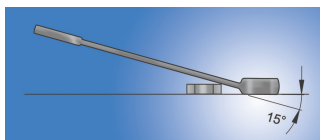


|        |     |     |      |      |      |      |      |
|--------|-----|-----|------|------|------|------|------|
| 618651 | 5   | 84  | 5.8  | 12   | 3    | 3    | 9    |
| 618652 | 5.5 | 84  | 5.8  | 12   | 3    | 3    | 9    |
| 600414 | 6   | 100 | 10.4 | 14.5 | 5    | 3.5  | 11   |
| 600415 | 7   | 109 | 11.5 | 16.5 | 5.8  | 3.9  | 15   |
| 600416 | 8   | 119 | 13.2 | 18.5 | 6.9  | 3.9  | 20   |
| 600417 | 9   | 123 | 14.3 | 21   | 7.3  | 4    | 25   |
| 600418 | 10  | 128 | 15.9 | 23   | 7.5  | 4.2  | 29   |
| 600419 | 11  | 135 | 17.8 | 24.5 | 8    | 4.5  | 35   |
| 600420 | 12  | 139 | 19.4 | 26.5 | 8.5  | 4.7  | 45   |
| 600421 | 13  | 150 | 20.4 | 29.5 | 8.5  | 5.2  | 54   |
| 600422 | 14  | 160 | 22   | 31.5 | 9    | 5.2  | 63   |
| 600423 | 15  | 170 | 23.2 | 33.5 | 9.5  | 5.7  | 78   |
| 600424 | 16  | 180 | 24.8 | 36   | 10.5 | 6.2  | 95   |
| 600425 | 17  | 190 | 26.1 | 38   | 10.5 | 6.7  | 121  |
| 600426 | 18  | 200 | 27.7 | 40   | 11   | 7.2  | 135  |
| 600427 | 19  | 210 | 29.3 | 42   | 12   | 7.2  | 157  |
| 600428 | 20  | 220 | 31   | 44   | 12.5 | 7.7  | 186  |
| 600429 | 21  | 230 | 32.6 | 45.5 | 13   | 8.2  | 198  |
| 600430 | 22  | 247 | 34.1 | 46.5 | 13   | 8.2  | 230  |
| 602089 | 23  | 250 | 35.7 | 50.5 | 13   | 8.2  | 254  |
| 602090 | 24  | 266 | 37.3 | 52.5 | 14   | 8.5  | 300  |
| 602091 | 25  | 270 | 39   | 54.5 | 14.5 | 8.5  | 330  |
| 602092 | 26  | 275 | 40.1 | 56   | 15   | 8.5  | 342  |
| 602093 | 27  | 292 | 41.6 | 57.5 | 15   | 9    | 365  |
| 602094 | 28  | 296 | 43.2 | 59.5 | 15.5 | 9    | 432  |
| 602095 | 29  | 300 | 44.9 | 61.5 | 16   | 9.5  | 455  |
| 602096 | 30  | 323 | 46.5 | 63.5 | 16   | 10   | 522  |
| 602097 | 32  | 343 | 49   | 68   | 16.5 | 10.5 | 602  |
| 603332 | 36  | 400 | 54.5 | 79.5 | 20   | 13.5 | 1115 |

|  |  | L   | B2 | B1   | A2 | A1   |  |
|---|--|-----|----|------|----|------|--|
| 618566  | 41   | 420 | 62 | 86.8 | 21 | 14.6 | 1575   |
| 618570  | 46   | 440 | 69 | 94   | 23 | 16   | 1985   |

\* Fotografije proizvoda su simbolične. Sve dimenzije su u mm, a težina u gramima. Sve navedene dimenzije mogu odstupati u granicama tolerancija.

## Upotreba (slike)



LIFE profil

## Bezbednost (slike)

